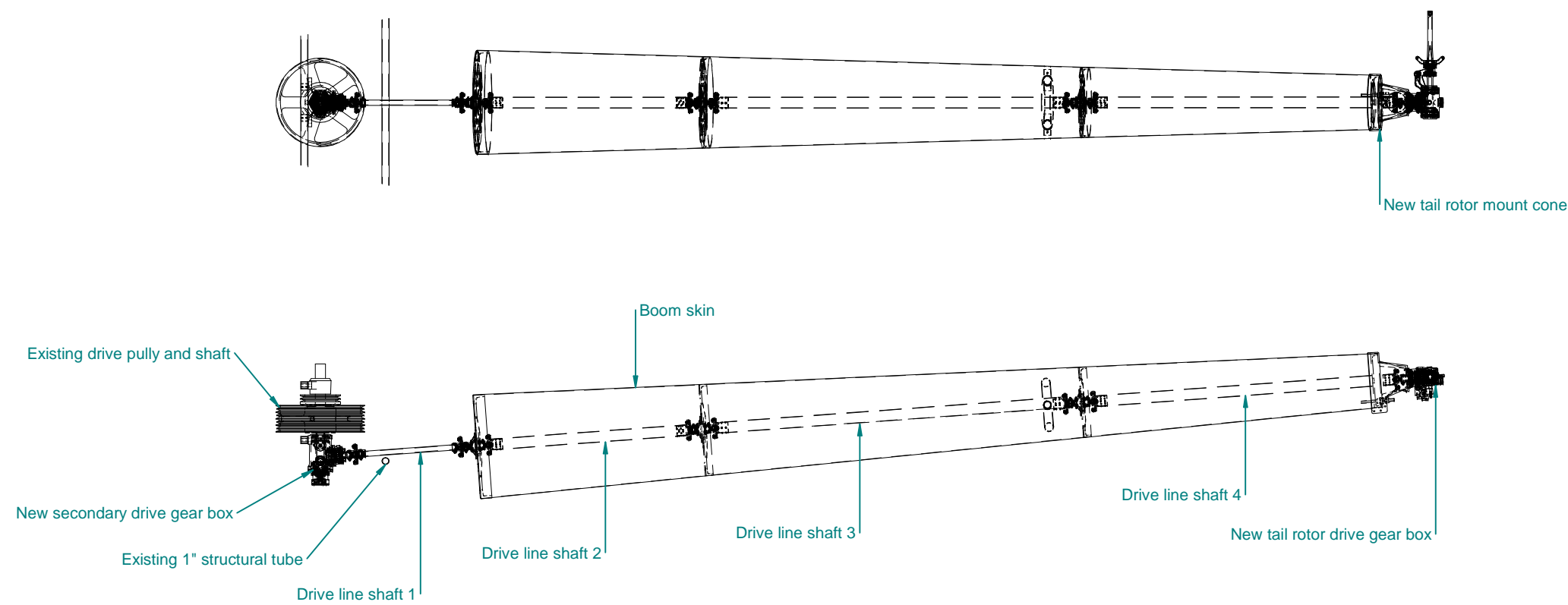


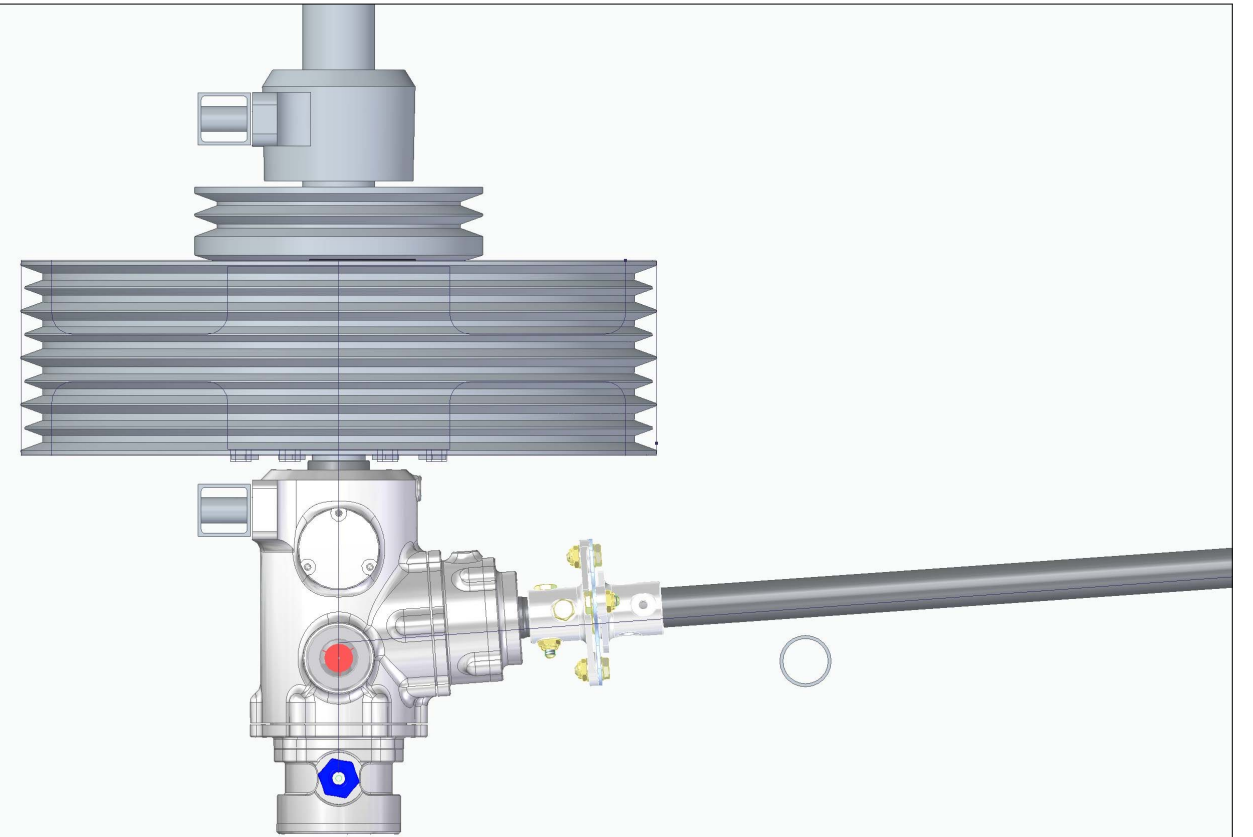
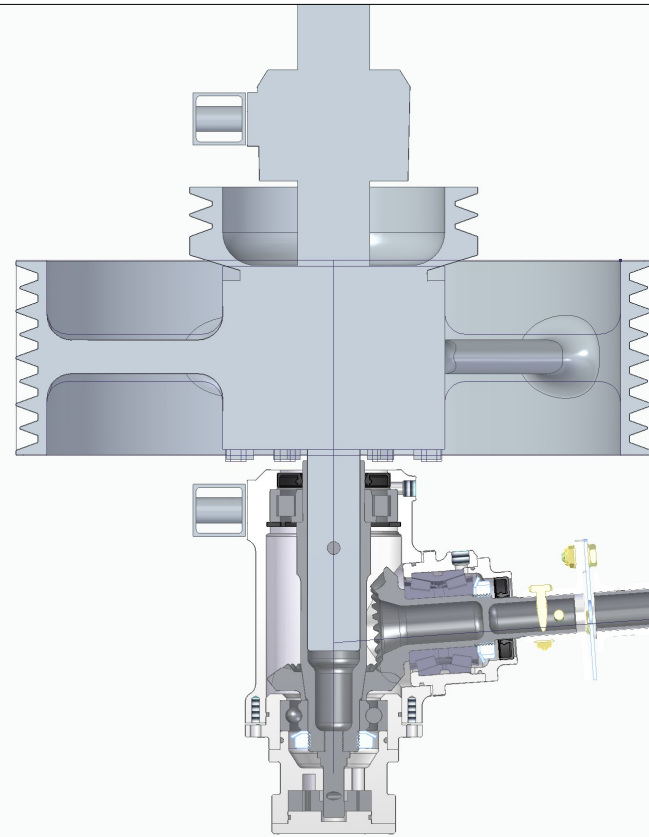
Assembly BOM						
Item #	Title	Qty	Material	Material Desc	Finish	Mass (Item)
1*	Bulkhead 1 bearing mount plate	1	Aluminum, 6061-T6			0.572 kg
2*	Bulkhead 2 bearing mount plate	1	Aluminum, 6061-T6			0.537 kg
3*	Bulkhead 3 bearing mount plate	1	Aluminum, 6061-T6			0.299 kg
4*	Complete Tail Rotor G/Box Assembly	1				3.426 kg
5*	Coupling assembly 1 1/2" shaft	6				0.133 kg
6*	Coupling assembly 3/4" shaft	2				0.147 kg
7*	Drive Line Bearing Assembly	3				0.235 kg
8*	Drive shaft # 1	1	4130 (Condition N)			0.249 kg
9*	Drive shaft # 2	1	Aluminum, 6061-T6			0.192 kg
10*	Drive shaft # 3	1	Aluminum, 6061-T6			0.342 kg
11*	Drive shaft # 4	1	Aluminum, 6061-T6			0.294 kg
12*	Secondary G/Box Assembly	1				2.671 kg
13*	Tail Plane Mount Weldment	1				0.688 kg



PRELIMINARY ONLY

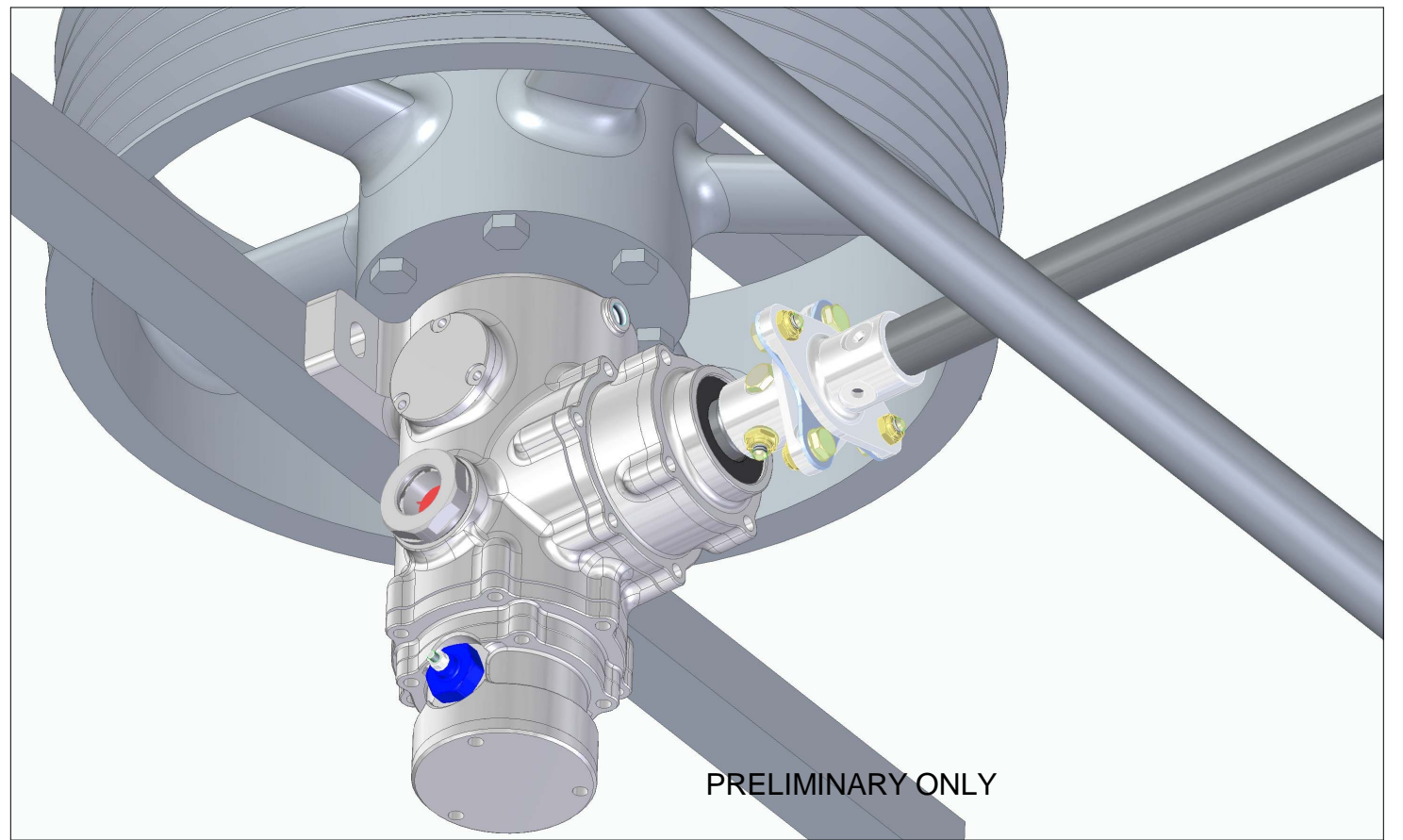
<b>Practical Mechanical Solutions</b> 6 Lavender Drive, Araluen Gympie, Queensland, 4570 Ph - 07 5482 9615 e-mail - practical.mechanical.solutions@gmail.com	LATEST REVISION	pract	12/05/2026	CLIENT	<b>GRAEME SMITH</b> Commercial In Confidence.
	DRAWN	pract	12/05/2026		
	CHECKED			PROJECT	<b>ROTORWAY TAIL DRIVE MODS</b>
	APPROVED			DETAIL	<b>MODIFICATION OVERVIEW</b>
<small>UNLESS OTHERWISE SPECIFIED DIMENSIONS ARE IN MILLIMETERS &amp; TOLERANCES ARE:          -0 PL ± 0.25 (Machined)          -0 PL ± 1.5 (Fabricated)          -1 PL ± 0.05          -2 PL ± 0.005          Angles 0 PL ± 0.25°</small>			DO NOT SCALE <b>A3 SHEET 1 OF 6</b>	DRG No	REV

The information contained on this drawing sheet should be understood and interpreted in conjunction with all associated drawing sheets and model files.



Lower secondary gear box is mounted to the lower shaft and to the lower bearing mount SHS cross member.  
 Lower drive shaft speed 2189 rpm  
 Gear ratio - 1.1364  
 Gear box output speed 2487 rpm.  
 Gearbox weight 2.67kg  
 1st output drive shaft is 19mm 4130 tube.

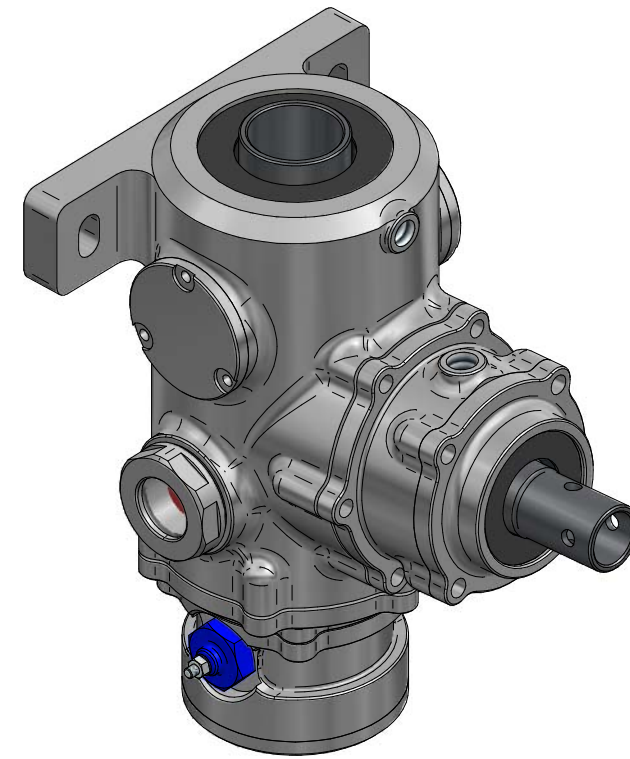
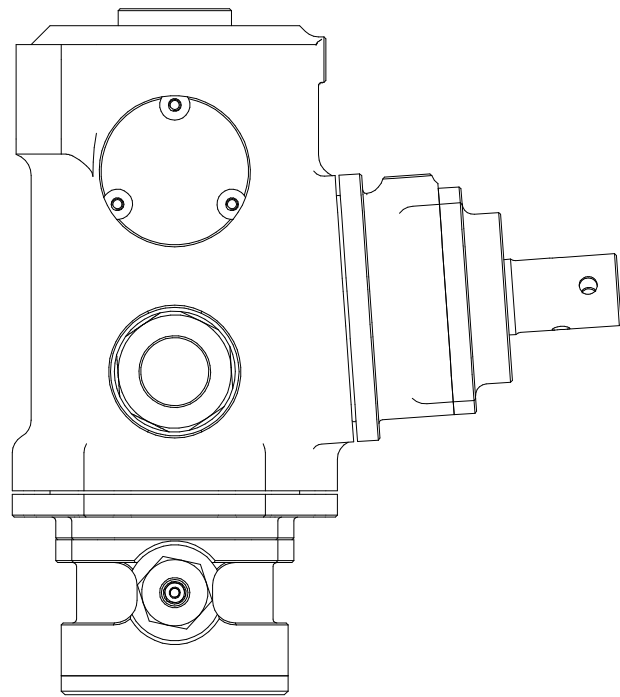
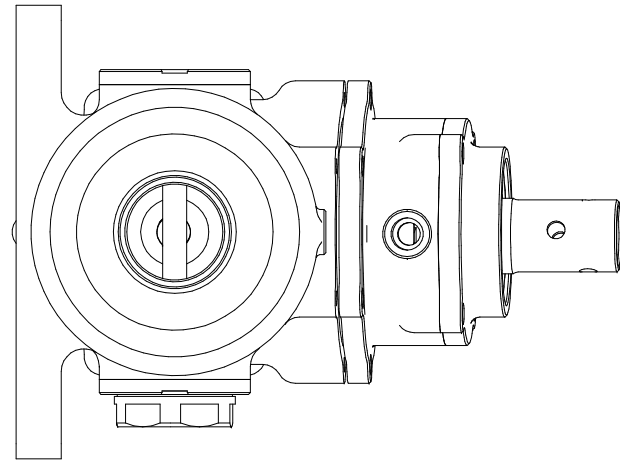
Fitted with  
 Oil circulation pump.  
 Sightglass  
 Metal detector.  
 Oil filter.  
 Breather.





PRELIMINARY ONLY

<b>Practical Mechanical Solutions</b> 6 Lavender Drive, Araluen Gympie, Queensland, 4570 Ph - 07 5482 9615 e-mail - practical.mechanical.solutions@gmail.com		LATEST REVISION	pract	12/05/2026	CLIENT	<b>GRAEME SMITH</b>	
		DRAWN	pract	12/05/2026	Commercial In Confidence.		
		CHECKED			PROJECT	ROTORWAY TAIL DRIVE MODS	
		APPROVED			DETAIL	MODIFICATION OVERVIEW	
The information contained on this drawing sheet should be understood and interpreted in conjunction with all associated drawing sheets and model files.		UNLESS OTHERWISE SPECIFIED DIMENSIONS ARE IN MILLIMETERS & TOLERANCES ARE: -0 PL ± 0.25 (Machined) -0 PL ± 1.5 (Fabricated) -1 PL ± 0.05 -2 PL ± 0.005 Angles 0 PL ± 0.25°		DO NOT SCALE <b>A3</b> SHEET 2 OF 6	DRG No	REV	

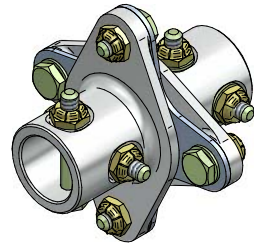
SECONDARY G/BOX ASSEMBLY



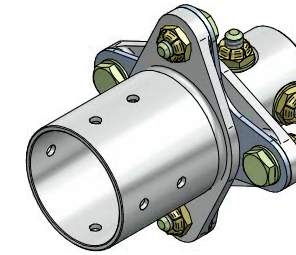
PRELIMINARY ONLY

<b>Practical Mechanical Solutions</b> 6 Lavender Drive, Araluen Gympie, Queensland, 4570 Ph - 07 5482 9615 e-mail - practical.mechanical.solutions@gmail.com		LATEST REVISION	pract	12/05/2026	CLIENT	<b>GRAEME SMITH</b>		
		DRAWN	pract	12/05/2026	Commercial In Confidence.			
		CHECKED			PROJECT	ROTORWAY TAIL DRIVE MODS		
		APPROVED			DETAIL	MODIFICATION OVERVIEW		
The information contained on this drawing sheet should be understood and interpreted in conjunction with all associated drawing sheets and model files.		UNLESS OTHERWISE SPECIFIED DIMENSIONS ARE IN MILLIMETERS & TOLERANCES ARE: -0 PL ± 0.25 (Machined) -0 PL ± 1.5 (Fabricated) -1 PL ± 0.05 -2 PL ± 0.005 Angles 0 PL ± 0.25°		 DO NOT SCALE	<b>A3</b> SHEET 3 OF 6	DRG No	REV	

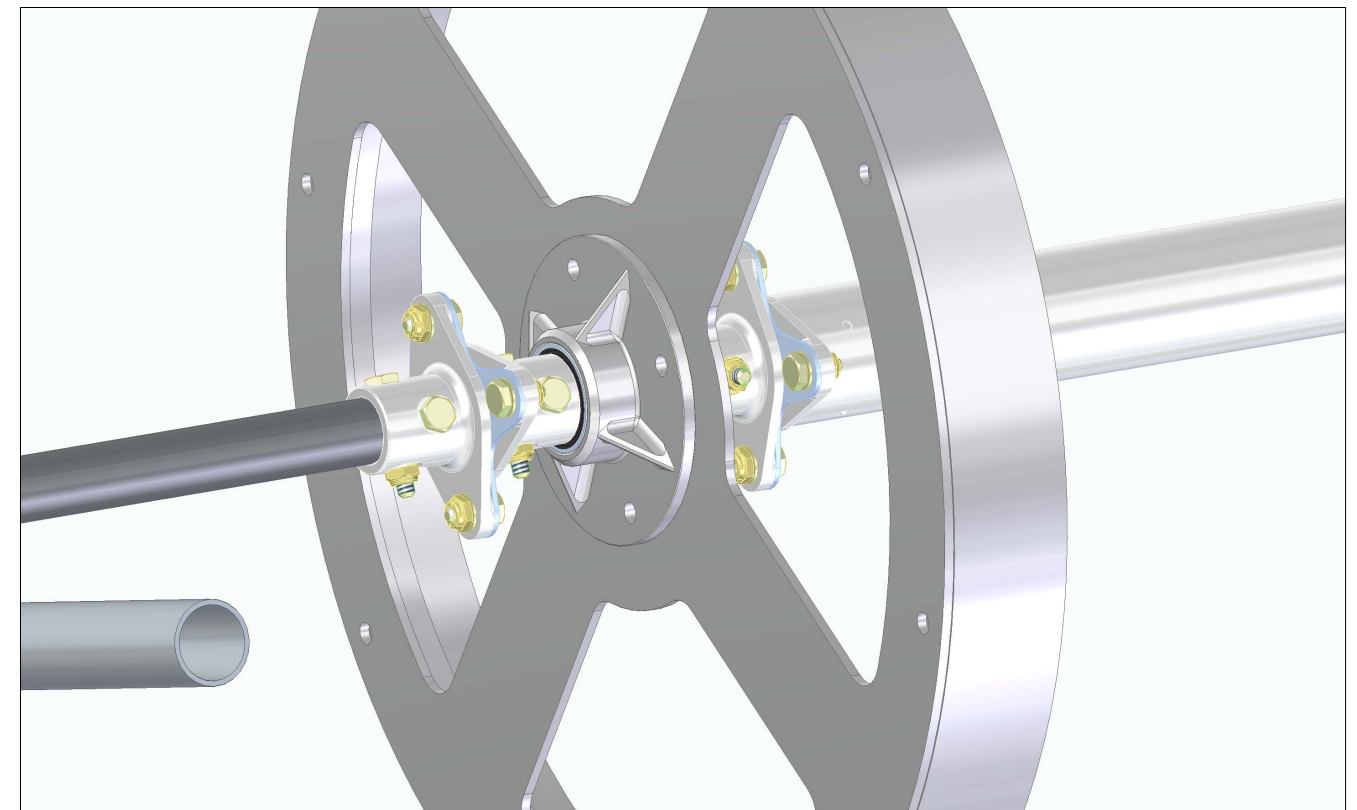
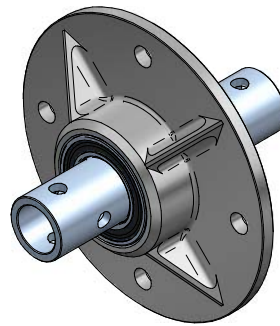
COUPLING ASSEMBLY 3/4" shaft.



COUPLING ASSEMBLY 1 1/2" shaft.

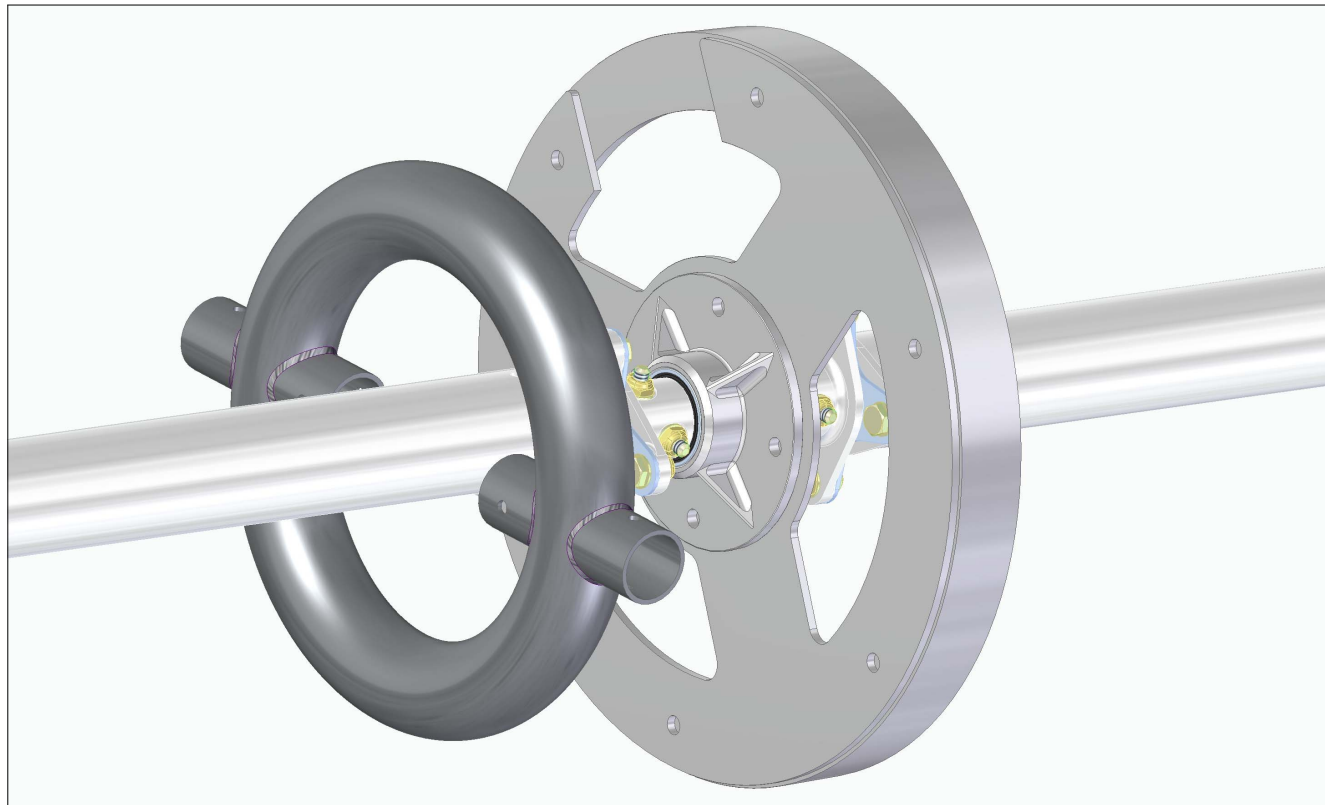


DRIVELINE BEARING ASSEMBLY



PRELIMINARY ONLY

<b>Practical Mechanical Solutions</b> 6 Lavender Drive, Araluen Gympie, Queensland, 4570 Ph - 07 5482 9615 e-mail - practical.mechanical.solutions@gmail.com		LATEST REVISION	pract	12/05/2026	CLIENT	<b>GRAEME SMITH</b>	
		DRAWN	pract	12/05/2026	Commercial In Confidence.		
		CHECKED			PROJECT	<b>ROTORWAY TAIL DRIVE MODS</b>	
		APPROVED			DETAIL	<b>MODIFICATION OVERVIEW</b>	
<i>The information contained on this drawing sheet should be understood and interpreted in conjunction with all associated drawing sheets and model files.</i>		<small>UNLESS OTHERWISE SPECIFIED DIMENSIONS ARE IN MILLIMETERS &amp; TOLERANCES ARE:          -0 PL ± 0.25 (Machined)          -0 PL ± 1.5 (Fabricated)          -1 PL ± 0.05          -2 PL ± 0.005          Angles 0 PL ± 0.25°</small>		DO NOT SCALE <b>A3</b> SHEET 4 OF 6	DRG No REV		



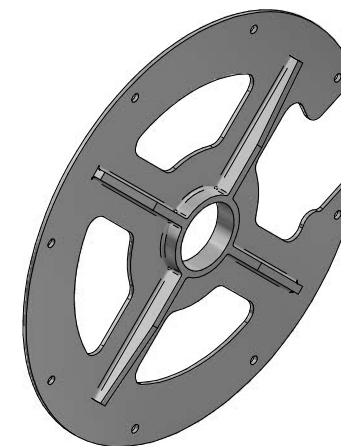
TAILPLANE MOUNT WELDMENT



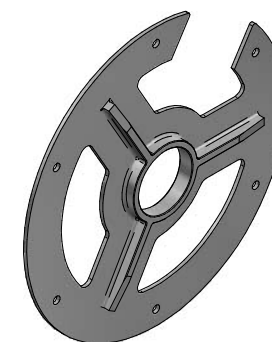
Bulkhead 1 bearing mount plate



Bulkhead 2 bearing mount plate



Bulkhead 3 bearing mount plate



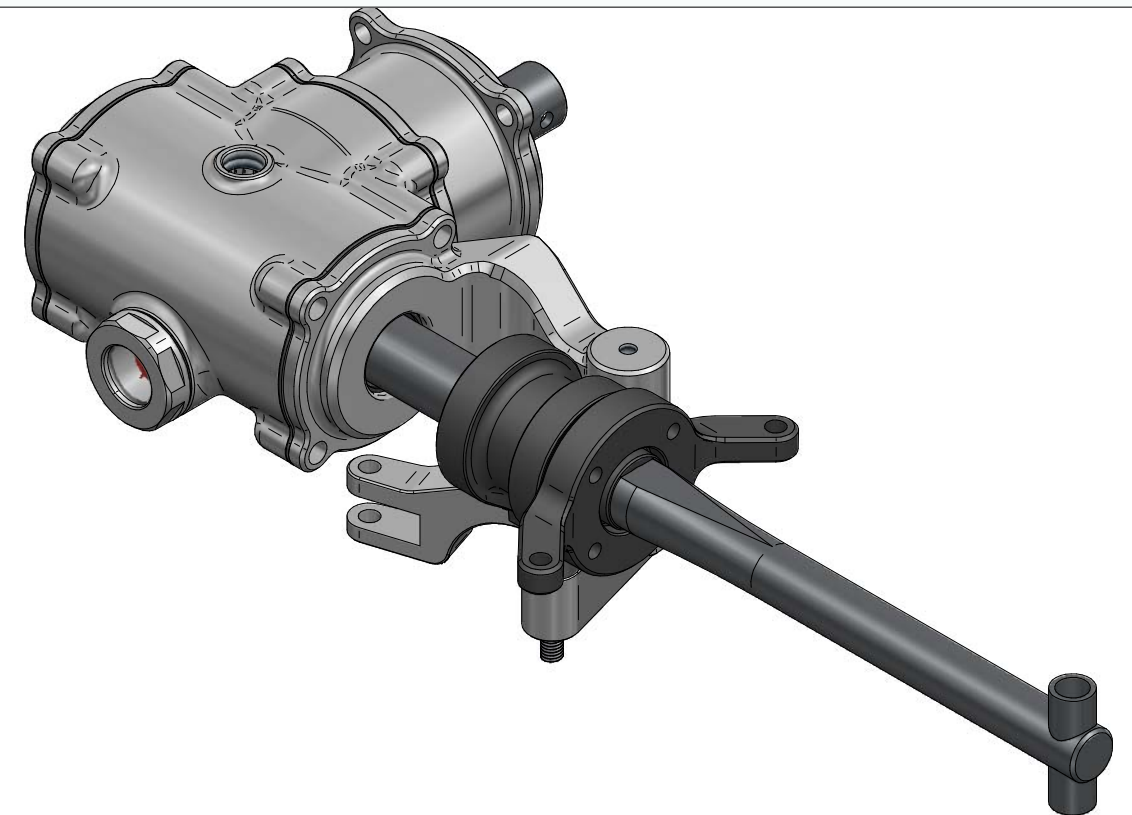
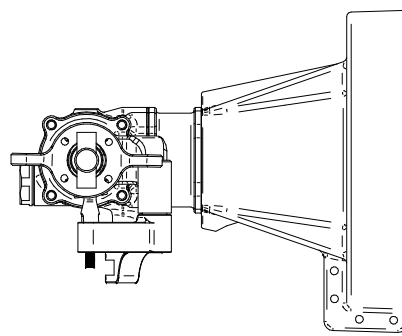
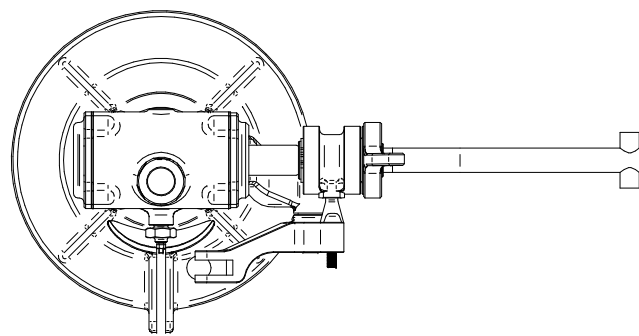
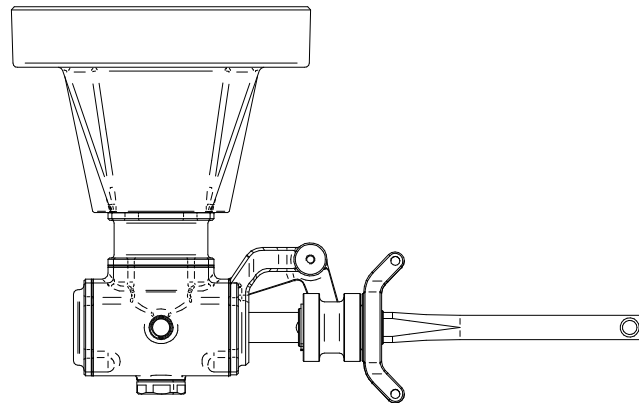
PRELIMINARY ONLY

<b>Practical Mechanical Solutions</b> 6 Lavender Drive, Araluen Gympie, Queensland, 4570 Ph - 07 5482 9615 e-mail - practical.mechanical.solutions@gmail.com		LATEST REVISION	pract	12/05/2026	CLIENT	<b>GRAEME SMITH</b>	
		DRAWN	pract	12/05/2026	Commercial In Confidence.		
		CHECKED			PROJECT	ROTORWAY TAIL DRIVE MODS	
		APPROVED			DETAIL	MODIFICATION OVERVIEW	
The information contained on this drawing sheet should be understood and interpreted in conjunction with all associated drawing sheets and model files.		UNLESS OTHERWISE SPECIFIED DIMENSIONS ARE IN MILLIMETERS & TOLERANCES ARE: -0 PL ± 0.25 (Machined) -0 PL ± 1.5 (Fabricated) -1 PL ± 0.05 -2 PL ± 0.005 Angles 0 PL ± 0.25°		<b>A3</b>	DO NOT SCALE <b>SHEET 5 OF 6</b>	DRG No	REV


Tail rotor gear box is mounted to the new tail cone.

Drive line speed 2487 rpm  
 Gear ratio - 1.15  
 Gear box output speed 2860 rpm.  
 Gearbox weight including mount cone 3.426kg  
 Output drive shaft is 20mm tapered to 16mm.  
 Splash lubricated.

Fitted with  
 Sightglass  
 Metal detector.  
 Breather.



PRELIMINARY ONLY

<b>Practical Mechanical Solutions</b> 6 Lavender Drive, Araluen Gympie, Queensland, 4570 Ph - 07 5482 9615 e-mail - practical.mechanical.solutions@gmail.com		LATEST REVISION	pract	12/05/2026	CLIENT	<b>GRAEME SMITH</b>	
		DRAWN	pract	12/05/2026	Commercial In Confidence.		
		CHECKED			PROJECT	ROTORWAY TAIL DRIVE MODS	
		APPROVED			DETAIL	MODIFICATION OVERVIEW	
The information contained on this drawing sheet should be understood and interpreted in conjunction with all associated drawing sheets and model files.		UNLESS OTHERWISE SPECIFIED DIMENSIONS ARE IN MILLIMETERS & TOLERANCES ARE: -0 PL ± 0.25 (Machined) -0 PL ± 1.5 (Fabricated) -1 PL ± 0.05 -2 PL ± 0.005 Angles 0 PL ± 0.25°		DO NOT SCALE <b>A3</b> SHEET 6 OF 6	DRG No REV		