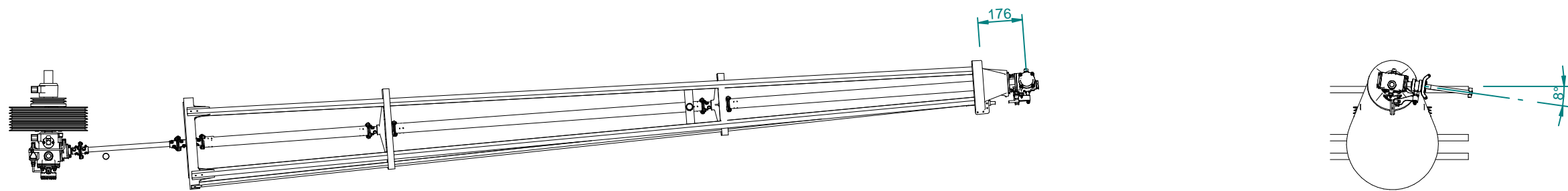
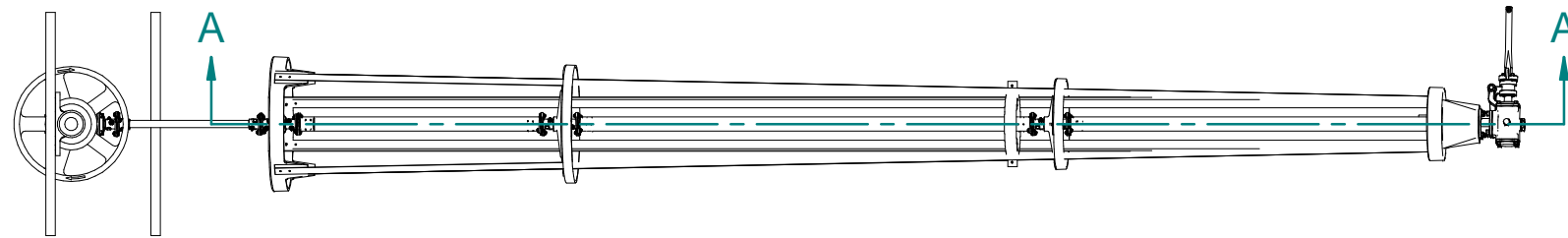
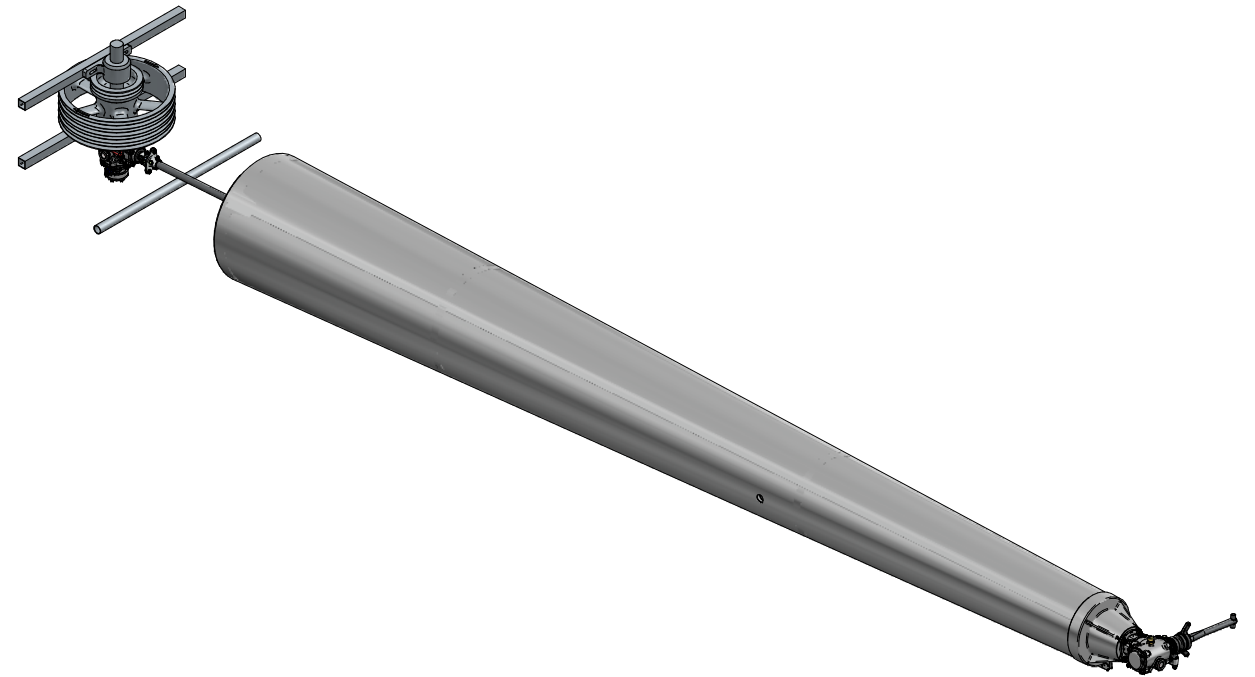


Assembly BOM									
Item #	Title	Document #	Qty	Category	Material	Material Desc	Fabrication	Finish	Mass (Item)
	ROTORWAY TAIL DRIVE MODIFICATION	GS-000		Assembly					11.145 kg
1*	SHCS 5/16 x .875 long		4	Hardware	Steel				0.013 kg
2*	Lock Nut 5/16"	AN363-5-16	4	Hardware	Steel				0.000 kg
3*	Light 5/16" Plain washer	AN960-516L	8	Hardware	Steel				0.000 kg
4*	SECONDARY GEAR BOX ASSEMBLY	GS-100	1	Assembly					3.245 kg
5*	Bulkhead 4 gearbox mount	GS-200-004	1	Machined	Aluminum, 6061-T6				0.881 kg
6*	Driveline tube # 1	GS-200-011	1	Tube	4130 (Condition N)		3/4" Tube .0625 wall		0.260 kg
7*	Driveline tube # 2	GS-200-012	1	Tube	Aluminum, 6061-T6		1 1/2" Tube .035" wall		0.182 kg
8*	Driveline tube # 3	GS-200-013	1	Tube	Aluminum, 6061-T6		1 1/2" Tube .035" wall		0.342 kg
9*	Driveline tube # 4	GS-200-014	1	Tube	Aluminum, 6061-T6		1 1/2" Tube .035" wall		0.297 kg
10*	BEARING SUPPORT ASSEMBLY # 1	GS-200-A10	1	Assembly					0.895 kg
11*	COUPLING ASSEMBLY 3/4" TUBE	GS-200-A11	1	Assembly					0.147 kg
12*	COUPLING ASSEMBLY 1 1-2 inch TUBE.asm	GS-200-A12	1	Assembly					0.133 kg
13*	BEARING SUPPORT ASSEMBLY # 2	GS-200-A20	1	Assembly					0.786 kg
14*	BEARING SUPPORT ASSEMBLY # 3	GS-200-A30	1	Assembly					0.632 kg
15*	TAILPLANE MOUNT WELDMENT.asm	GS-200-W10	1	Weldment					0.686 kg
16*	TAIL ROTOR GEAR BOX ASSEMBLY	GS-300	1	Assembly					2.609 kg



This drawing and associated cad files are the property of Graeme Smith.

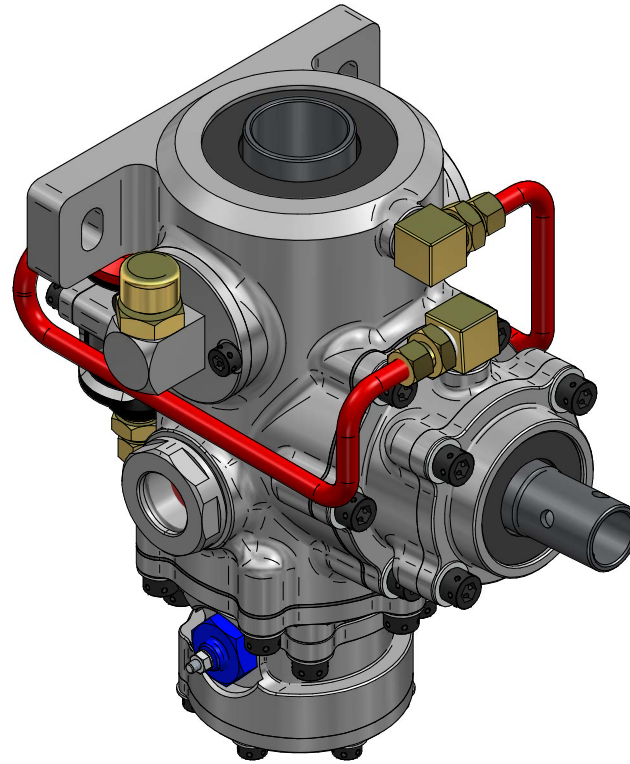
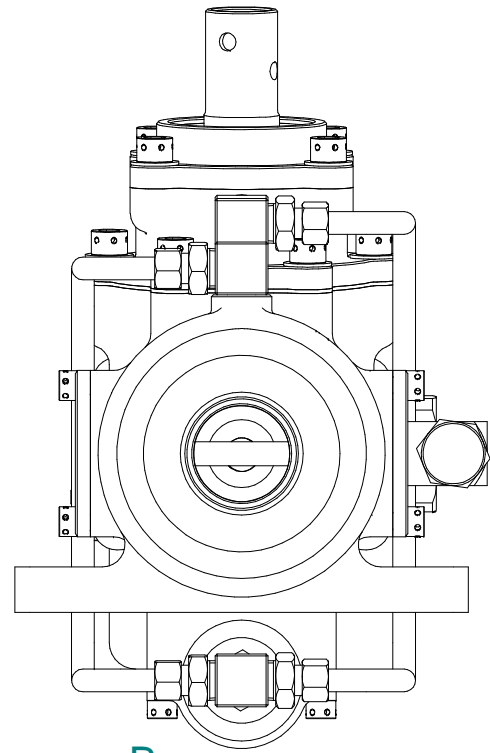
Practical Mechanical Solutions 6 Lavender Drive, Araluen Gympie, Queensland, 4570 Ph - 07 5482 9615 e-mail - practical.mechanical.solutions@gmail.com	LATEST REVISION	pract	28/05/2026	CLIENT	GRAEME SMITH Commercial In Confidence.
	DRAWN	pract	28/05/2026	PROJECT	
	CHECKED			DETAIL	MODS (OVERVIEW)
	APPROVED			DRG No	GS-000
<small>UNLESS OTHERWISE SPECIFIED DIMENSIONS ARE IN MILLIMETERS & TOLERANCES ARE: -0 PL ± 0.25 (Machined) -0 PL ± 1.5 (Fabricated) -1 PL ± 0.05 -2 PL ± 0.005 Angles 0 PL ± 0.25°</small>			DO NOT SCALE	SHEET 1 OF 5	REV



Boom skin hidden.

This drawing and associated cad files are the property of Graeme Smith.

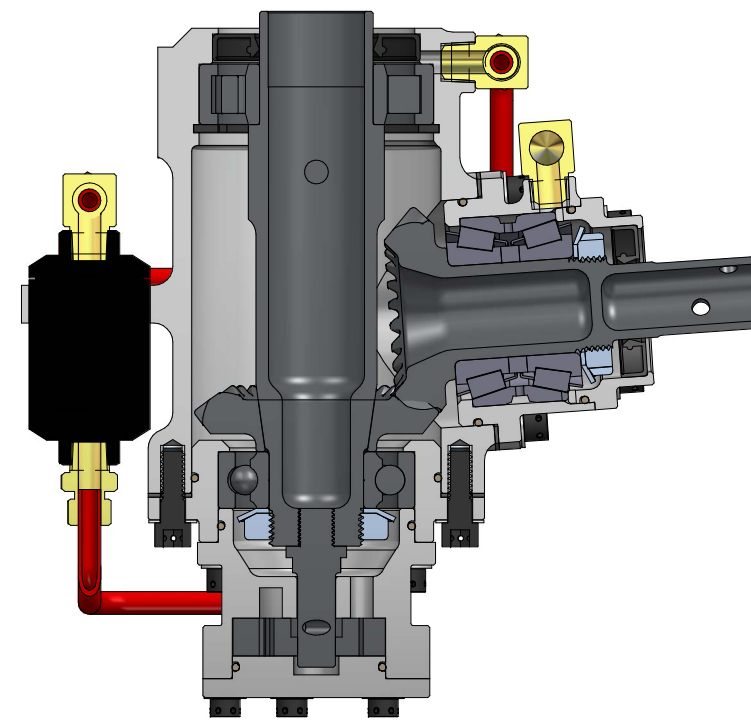
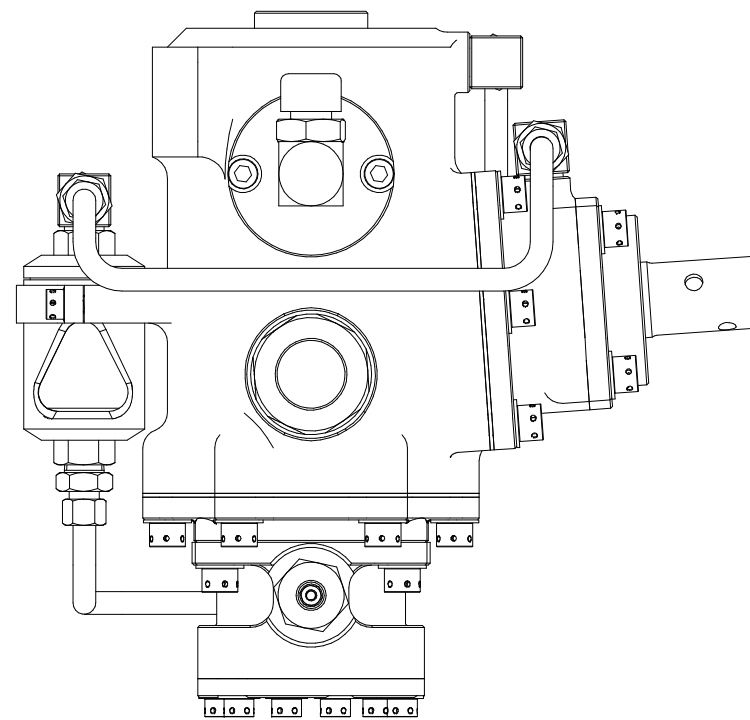
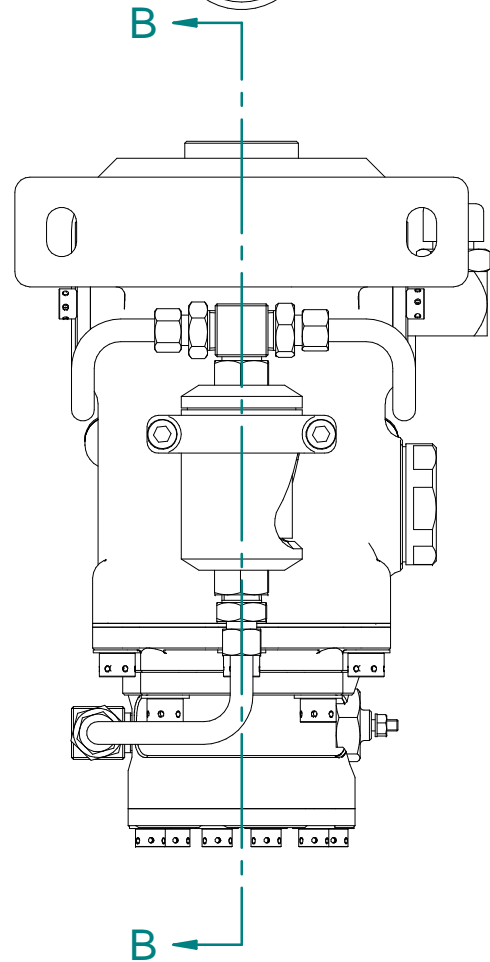
Practical Mechanical Solutions 6 Lavender Drive, Araluen Gympie, Queensland, 4570 Ph - 07 5482 9615 e-mail - practical.mechanical.solutions@gmail.com		LATEST REVISION	pract	28/05/2026	CLIENT	GRAEME SMITH	
		DRAWN	pract	28/05/2026	Commercial In Confidence.		
		CHECKED			PROJECT	ROTORWAY TAIL DRIVE MODS	
		APPROVED			DETAIL	MODS (OVERVIEW)	
<small>The information contained on this drawing sheet should be understood and interpreted in conjunction with all associated drawing sheets and model files.</small>		<small>UNLESS OTHERWISE SPECIFIED DIMENSIONS ARE IN MILLIMETERS & TOLERANCES ARE</small> -0 PL ± 0.25 (Machined) -0 PL ± 1.5 (Fabricated) -1 PL ± 0.05 -2 PL ± 0.005 Angles 0 PL ± 0.25°		 DO NOT SCALE A3 SHEET 2 OF 5	DRG No GS-000	REV	



Secondary Gear box complete with oil pump and filter.



Mounts to the existing secondary drive shaft and to the lower secondary bearing mount.

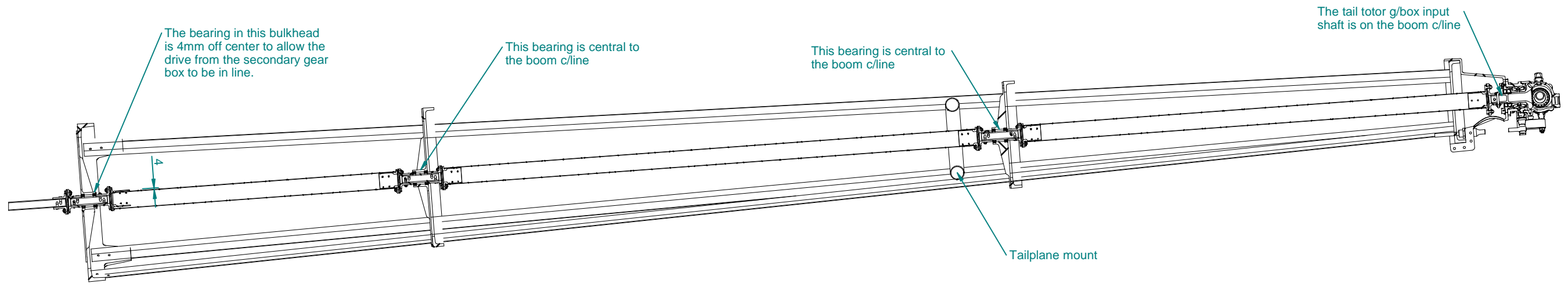
Speed increase from 2189 rpm to 2487.5 rpm.
Weight 3.245 kg



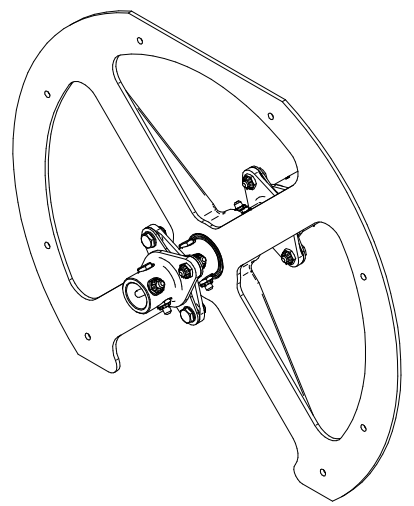
SECTION B-B

This drawing and associated cad files are the property of Graeme Smith.

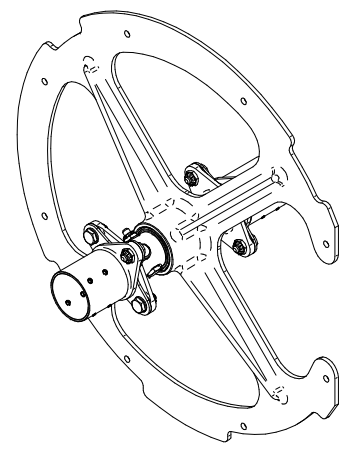
Practical Mechanical Solutions 6 Lavender Drive, Araluen Gympie, Queensland, 4570 Ph - 07 5482 9615 e-mail - practical.mechanical.solutions@gmail.com		LATEST REVISION	pract	28/05/2026	CLIENT	GRAEME SMITH	
		DRAWN	pract	28/05/2026	Commercial In Confidence.		
		CHECKED			PROJECT	ROTORWAY TAIL DRIVE MODS	
		APPROVED			DETAIL	MODS (OVERVIEW)	
<small>The information contained on this drawing sheet should be understood and interpreted in conjunction with all associated drawing sheets and model files.</small>		<small>UNLESS OTHERWISE SPECIFIED DIMENSIONS ARE IN MILLIMETERS & TOLERANCES ARE: -0 PL ± 0.25 (Machined) -0 PL ± 1.5 (Fabricated) -1 PL ± 0.05 -2 PL ± 0.005 Angles 0 PL ± 0.25°</small>		 DO NOT SCALE A3 SHEET 3 OF 5	DRG No GS-000	REV	



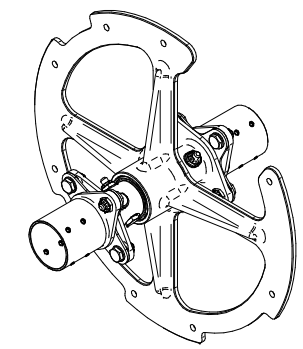
SECTION A-A



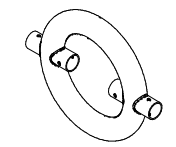
Bulkhead # 1 bearing support
Weight 0.895 kg



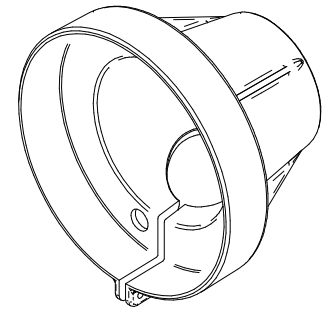
Bulkhead # 2 bearing support
Weight 0.786 kg



Bulkhead # 3 bearing support
Weight 0.632 kg



Tailplane mount
Weight 0.686 kg



Bulkhead # 4 tail g/box
mount
Weight 0.881 kg

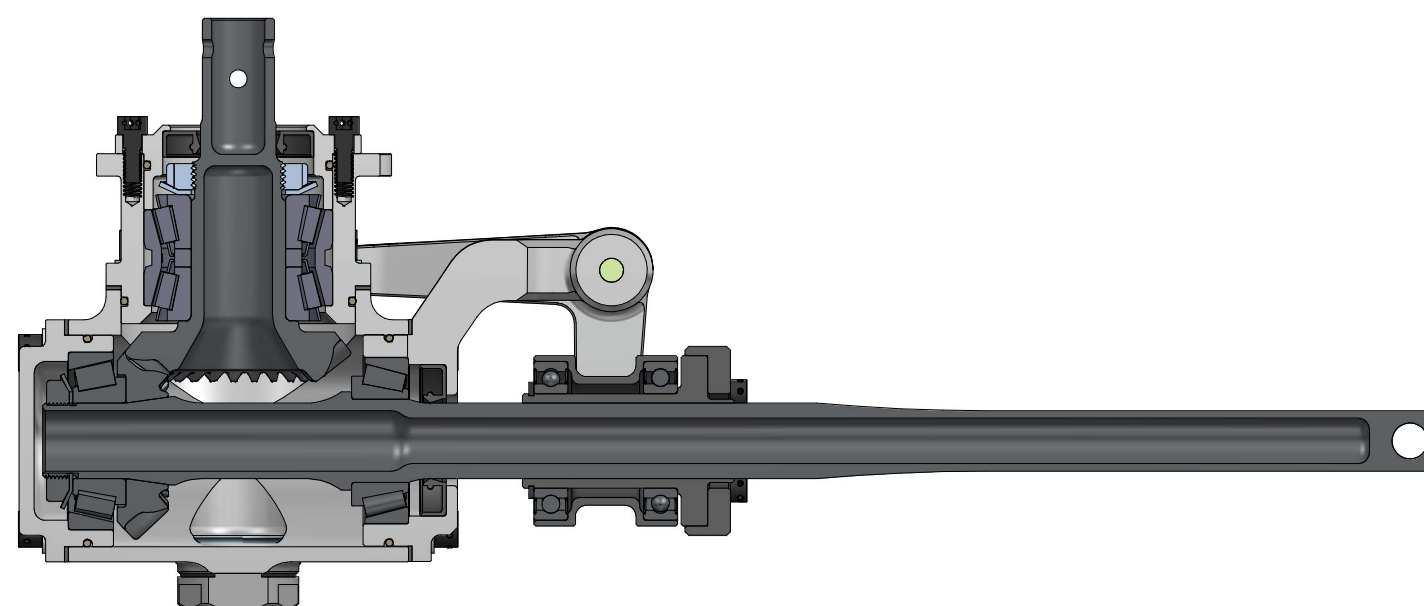
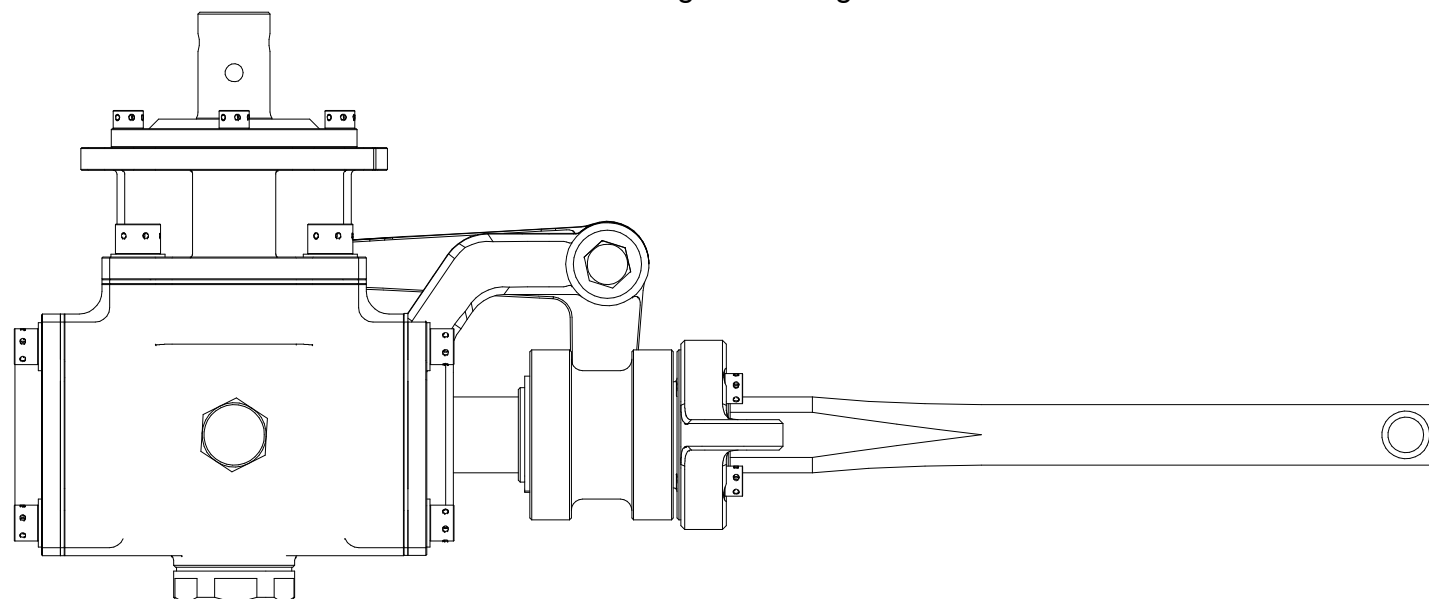
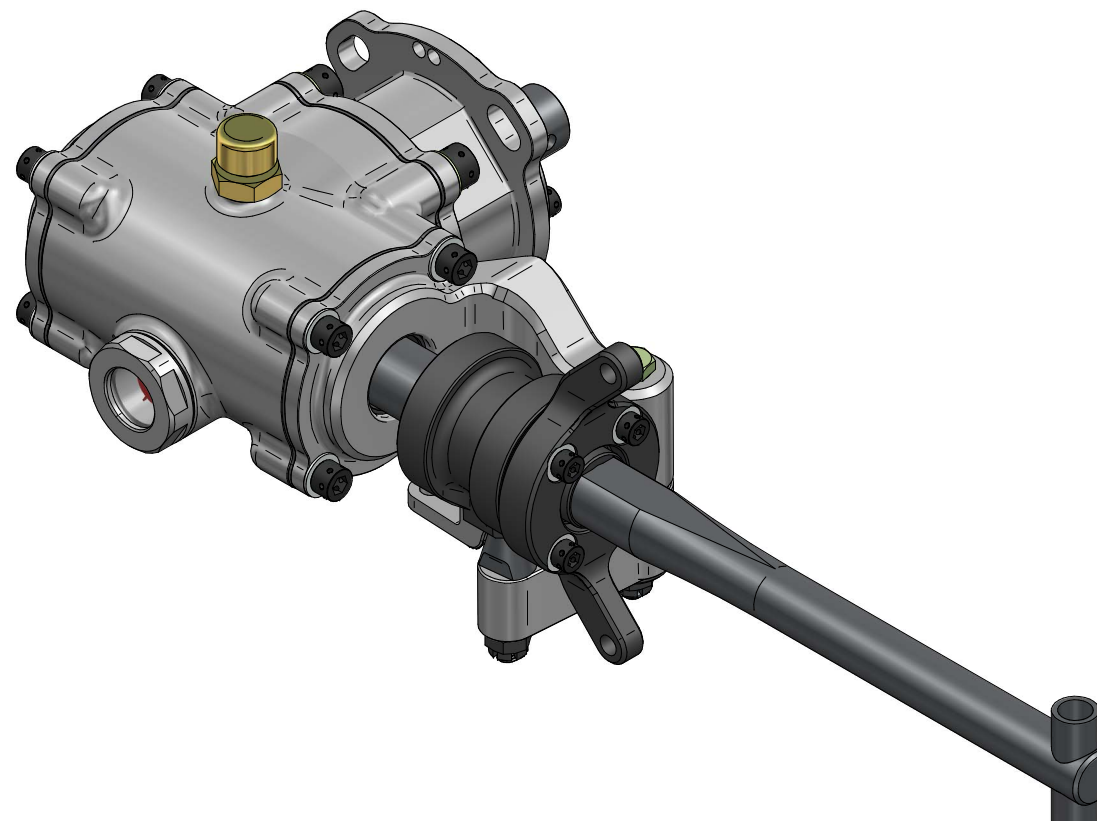
Practical Mechanical Solutions 6 Lavender Drive, Araluen Gympie, Queensland, 4570 Ph - 07 5482 9615 e-mail - practical.mechanical.solutions@gmail.com		LATEST REVISION	pract	28/05/2026	CLIENT	GRAEME SMITH	
		DRAWN	pract	28/05/2026	Commercial In Confidence.		
		CHECKED			PROJECT	ROTORWAY TAIL DRIVE MODS	
		APPROVED			DETAIL	MODS (OVERVIEW)	
The information contained on this drawing sheet should be understood and interpreted in conjunction with all associated drawing sheets and model files.		UNLESS OTHERWISE SPECIFIED DIMENSIONS ARE IN MILLIMETERS & TOLERANCES ARE: -0 PL ± 0.25 (Machined) -0 PL ± 1.5 (Fabricated) -1 PL ± 0.05 -2 PL ± 0.005 Angles 0 PL ± 0.25°		DO NOT SCALE A3 SHEET 4 OF 5	DRG No GS-000	REV	

WELDMENT

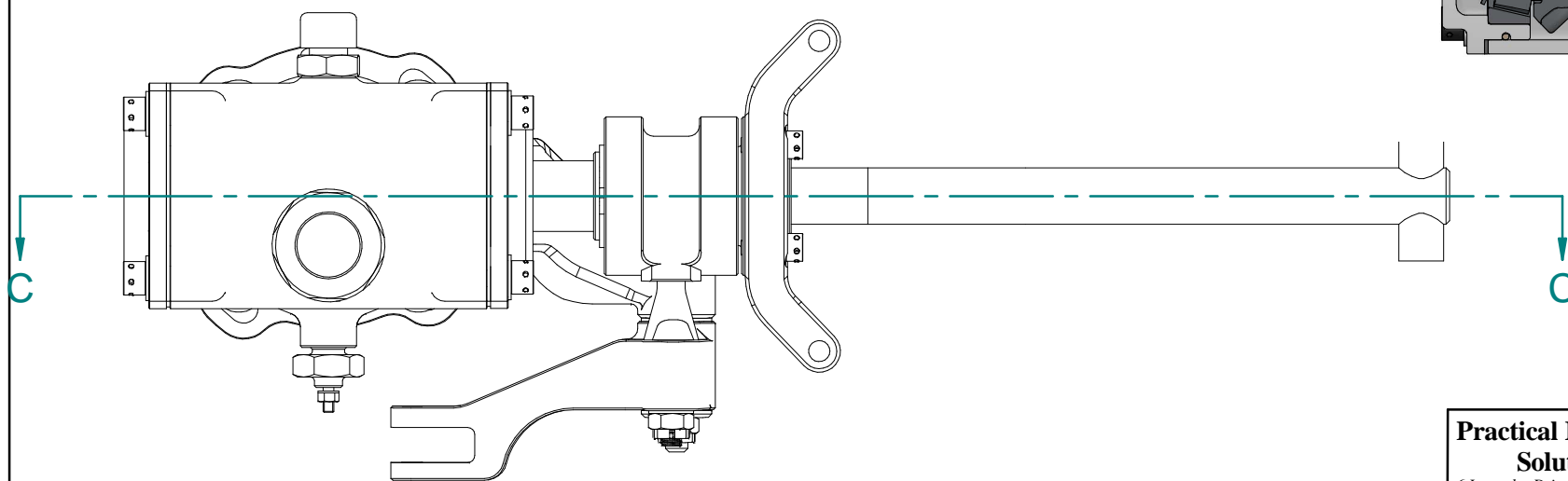
WELDMENT

Tail rotor Gear box complete with pitch slider assembly.


Mounts to the tail cone on the end of the boom.
 Speed increase from 2487.5 rpm to 2860.6 rpm
 Weight 2.609 kg



SECTION C-C



This drawing and associated cad files are the property of Graeme Smith.

Practical Mechanical Solutions 6 Lavender Drive, Araluen Gympie, Queensland, 4570 Ph - 07 5482 9615 e-mail - practical.mechanical.solutions@gmail.com		LATEST REVISION	pract	28/05/2026	CLIENT	GRAEME SMITH	
		DRAWN	pract	28/05/2026	Commercial In Confidence.		
		CHECKED			PROJECT	ROTORWAY TAIL DRIVE MODS	
		APPROVED			DETAIL	MODS (OVERVIEW)	
The information contained on this drawing sheet should be understood and interpreted in conjunction with all associated drawing sheets and model files.		UNLESS OTHERWISE SPECIFIED DIMENSIONS ARE IN MILLIMETERS & TOLERANCES ARE: -0 PL ± 0.25 (Machined) -0 PL ± 1.5 (Fabricated) -1 PL ± 0.05 -2 PL ± 0.005 Angles 0 PL ± 0.25°		DO NOT SCALE A3 SHEET 5 OF 5	DRG No GS-000	REV	